

Smashing eggs

At-home science activity

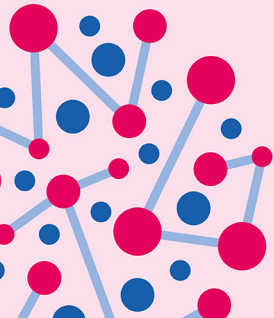


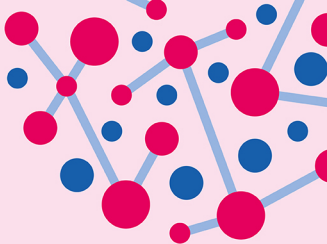
twigEDUCATION

You will need:

- One hard and one soft surface
- A stepladder
- Eggs

***Note:** with smaller kids, this should be done in the presence of a guardian.





1. Make sure the surfaces are ones you can easily clean up.
2. Place the stepladder next to the surfaces.
3. Drop the first egg from just over one meter above the hard surface.
4. From same height, drop the egg on the soft surface.

5. Notice what happened:

Different rates of deceleration affect the outcome of collisions—such as an egg hitting a surface. One egg is dropped onto a hard surface and breaks. The second egg is dropped onto a soft surface and bounces, as the material slows its deceleration.

