

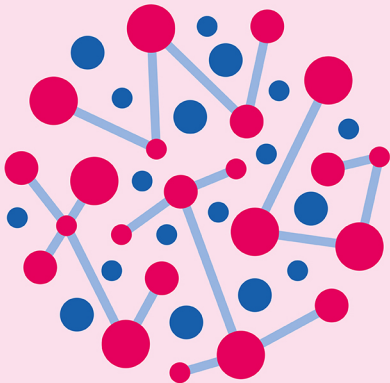
# Moving shadows

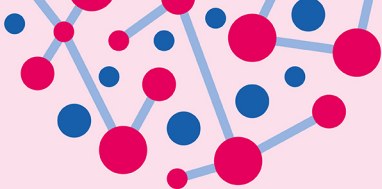
At-home science activity



## You will need:

- A pole
- A sunny day
- Chalk





1. Set up a pole outside, in an area where it is likely to be in sunlight throughout the day, and where chalk markings can be made on the ground surrounding it.
2. At the start of the day, mark the position of the pole's shadow and label it with the time.
3. Specify that they mark both the angle and the length of the shadow.
4. On each subsequent hour, go outside and mark the shadow and time.

5. Towards the end of the day, go outside to look at the results.

6. Identify the sun's position at this time. Ask your child to predict where in the sky the sun would have been for each of the earlier results.

7. This activity should demonstrate that the sun is always in the opposite direction to the shadow, and shadows are longest at the beginning and end of the day and shortest around midday.

