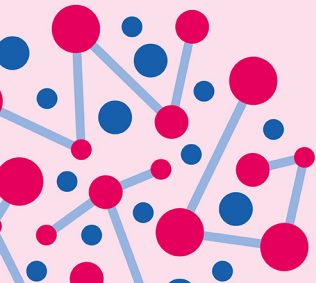


Make a windmill

At-home science activity



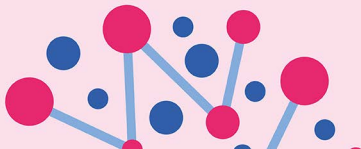
'twig' EDUCATION

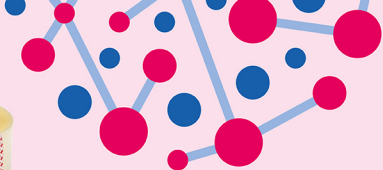
You will need:

- Paper (approximately 10 cm/4" square)
- Glue
- Split pin
- 2 straws (one slightly larger than the other so it can slide over it)
- Disposable cup
- Sticky tape
- 50 cm/20" thread
- Paper clips
- Scissors



1. Fold the sheet of paper diagonally both ways and then unfold. Repeat from the other corner.
2. Cut halfway along each folded line.
3. Fold each of the corners into the center and glue in place, taking care to ensure the folds are curved, not flat.
4. Use a pencil to punch a small hole through the center and push a split pin through the hole.
5. Bend the back of the split pin and push the ends inside the narrower straw, securing it in position with a piece of sticky tape.





7. Cut a small piece from the wider straw, just long enough to fit lengthways along the bottom of the disposable cup and tape into position.

8. Slide the narrow straw inside the piece of wider straw. Check that the paper blades turn freely when blown.

9. Use the thread to hang the paperclip/modelling clay from the end of the narrow straw and fix in place with sticky tape. As the blades are blown, the thread will wrap around the straw, lifting the paperclip.