

Greenhouse effect

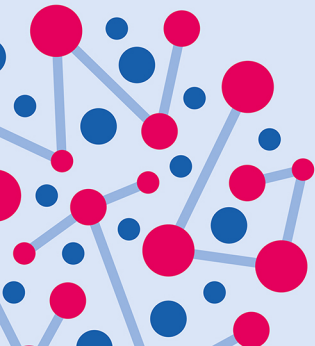
At-home science activity

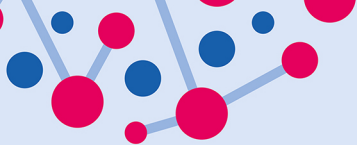


twig EDUCATION

You will need:

- 2 beakers or drinking glasses
- Iced water
- 2 thermometers
- Transparent plastic bag
- Elastic band



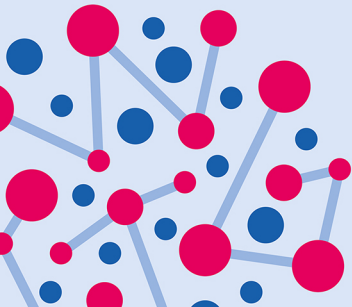


This activity helps to illustrate how greenhouse gases in the atmosphere cause global warming.

1. Fill the two beakers with identical quantities of ice and water.
2. Place a thermometer in each to make sure that their starting temperatures are the same.
3. Wrap one container in a transparent plastic bag and secure with an elastic band.

4. Place both containers in a sunny position and record the temperature in each every 10 minutes for an hour.

5. What happens? Do the containers stay the same temperature? Why/why not? And what are greenhouse gases? Swipe to find out!



- The plastic bag represents the increased levels of carbon dioxide in the atmosphere, acting as a “lid” that traps.
- Both containers get the same amount of sunlight. This means they can absorb the heat energy, which warms up the water.
- But the container with the bag on it also traps the heat given off by the water, which makes the temperature higher.
- This is similar to the way that a greenhouse keeps heat energy from the sun inside.
- This is why carbon dioxide and certain other gases that lead to global warming are called “greenhouse gases.”