

3D landscape maps

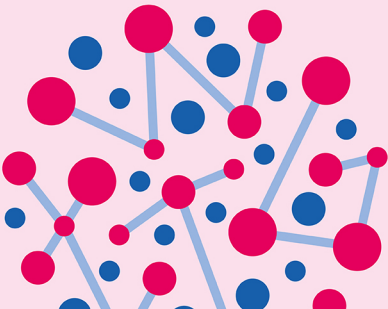
At-home science activity

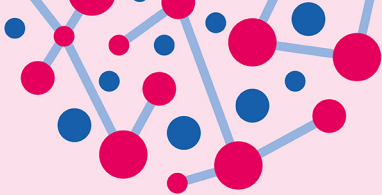


twig EDUCATION

You will need:

- Salt dough (made from 1 part salt, 1 part water and 2 parts flour)
- Access to different maps
- Thick card (large pieces)
- Sticky tape
- Pencil
- Permanent marker
- Paint





1. First do some research: pick a country and find out about its landscape, major cities, and key landmarks using a map (paper or digital!)
2. Use the permanent marker to draw the country's outline onto a piece of card.
3. Press the salt dough inside the map outline, building up areas of land and (if relevant) hills and mountains.
4. Leave the salt dough to dry before you continue.

5. Now it's time to paint your 3D map! Think about which colors and symbols to use to represent different things, like water, lowlands, hills, vegetation, mountain peaks, major cities, and key landmarks.

6. If you want, create a map key explaining what the map's colors and symbols mean.

